

ITL Camera Characterization Report

Customer	UASAL
System	ZWO ASI294MM-P
ID	2f348f01230009000
Operator	Michael Lesser
Comment	Mode bin1, -15C, gain 120, offset 10
Report date	May-02-2024

Gain Analysis

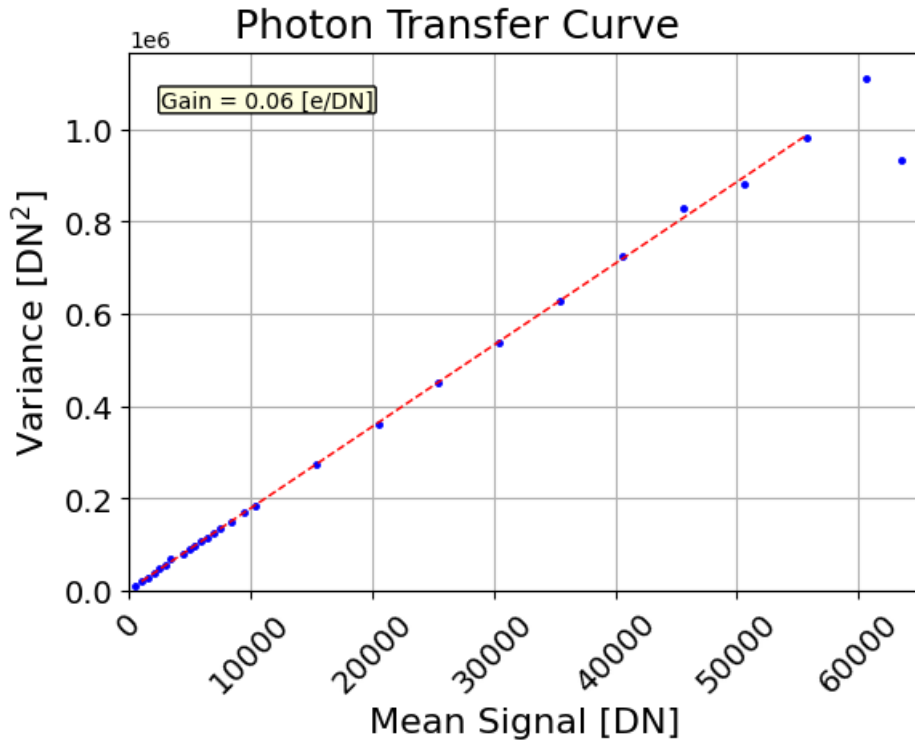
Read Noise in electrons is not system noise corrected

Channel	Gain [e/DN]	Noise [e]	Sens. [uV/e]	Bias[DN]
00	0.05	2.5	0.00	572.9

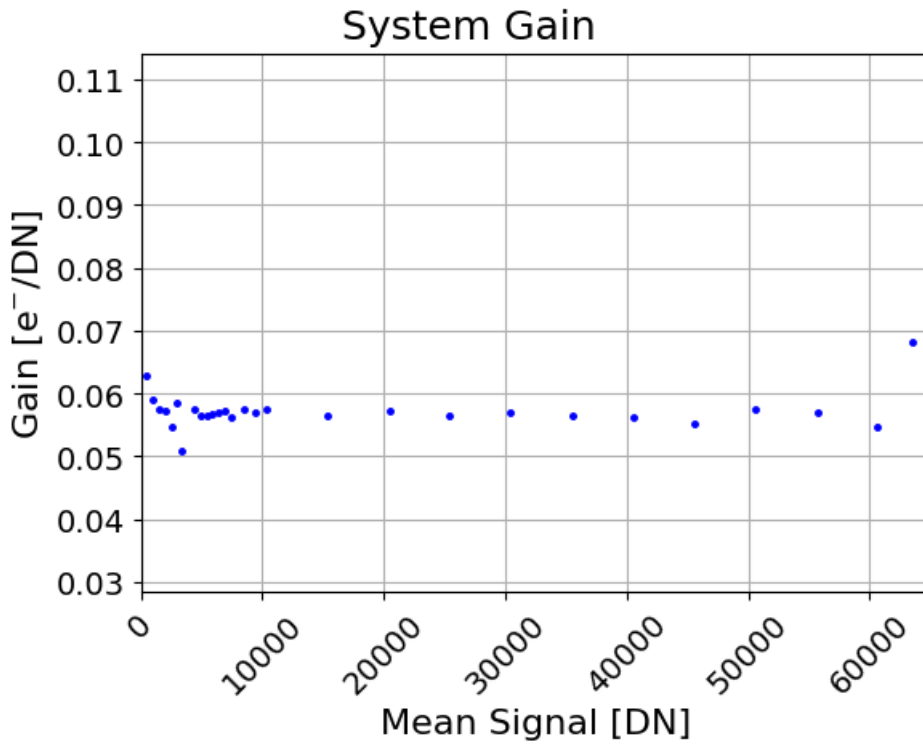
PRNU Analysis

Wavelength	PRNU [%]
0400	0.9
0450	1.4
0500	1.4
0550	0.9
0600	1.1
0650	2.3
0700	1.9
0750	2.8
0800	3.3

PTC Analysis



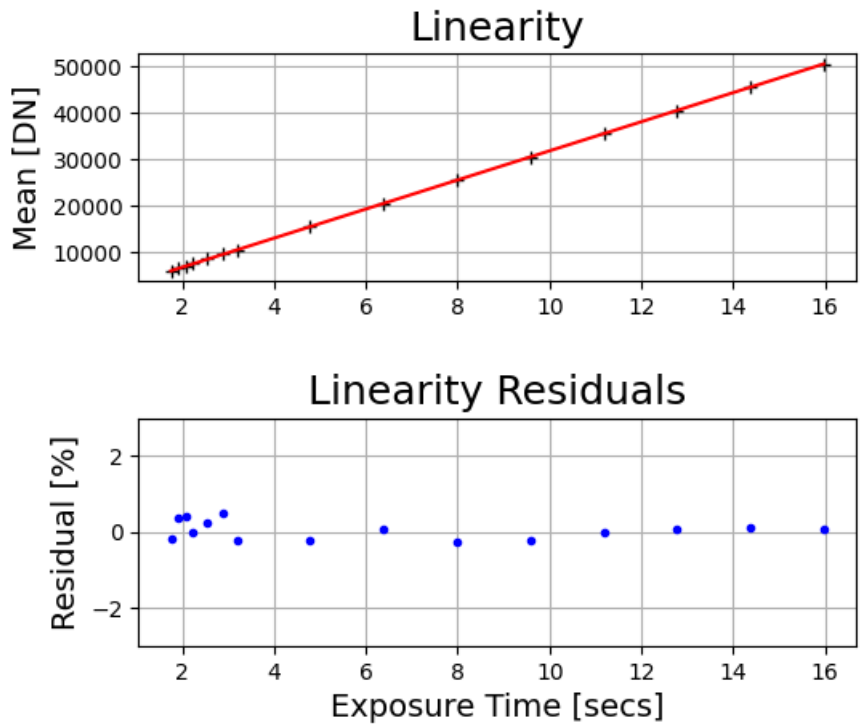
Photon Transfer Curve.



Photon Transfer Gain Plot.

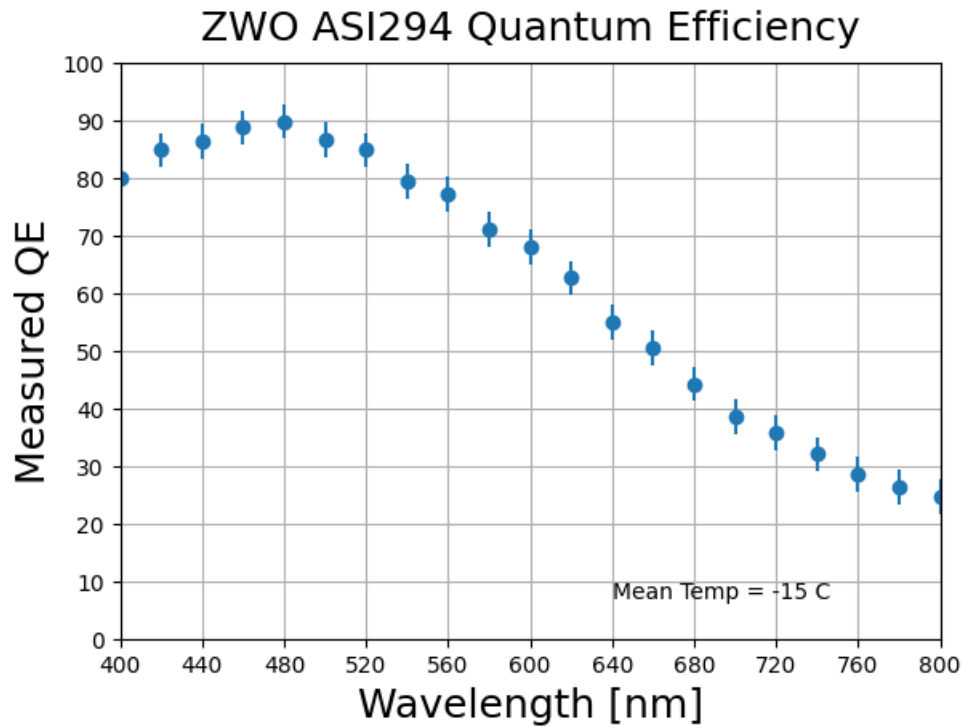
Linearity Analysis

Max residual value [%]: 0.5
Minimum fit limit [DN]: 5500.0
Maximum fit limit [DN]: 49500.0
Mean residuals [%]: 0.2



Linearity and residuals Plot.

Quantum Efficiency Analysis



Quantum Efficiency Plot.

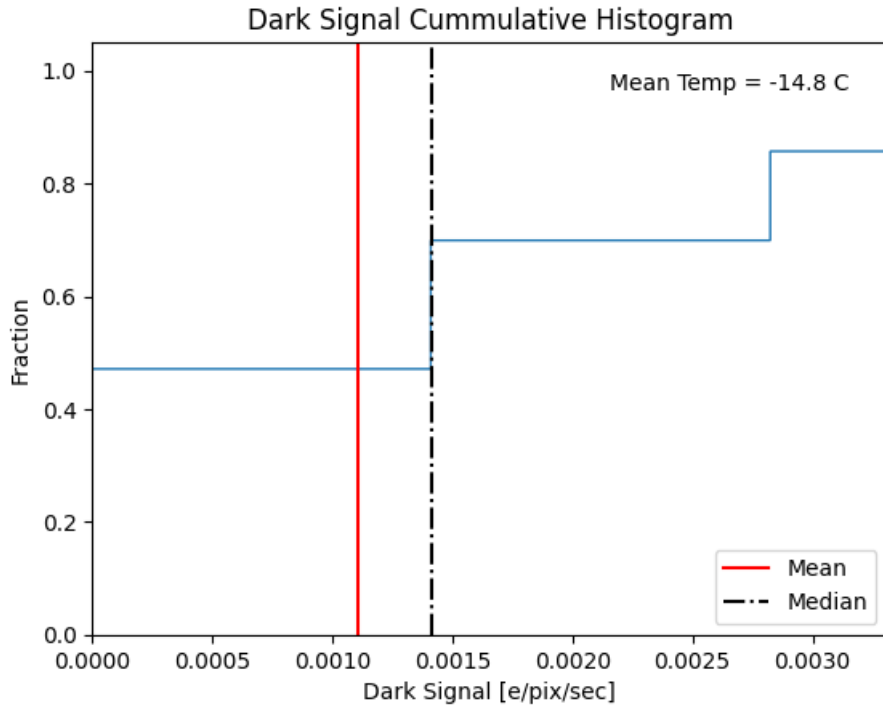
Wavelength	QE
400	0.800
420	0.848
440	0.864
460	0.887
480	0.898
500	0.865
520	0.848
540	0.793
560	0.772
580	0.711
600	0.680
620	0.626
640	0.549
660	0.504
680	0.442
700	0.386
720	0.357
740	0.320
760	0.286
780	0.264

Wavelength	QE
800	0.246

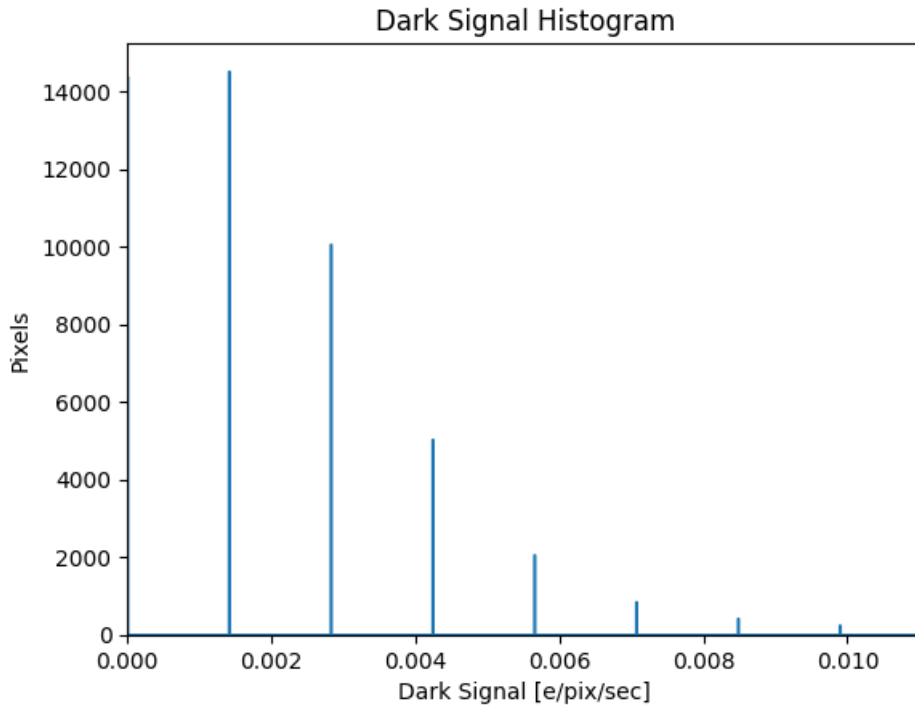
Dark Signal Analysis

Mean dark signal is 0.001 e/pix/sec

Median dark signal is 0.001 e/pix/sec

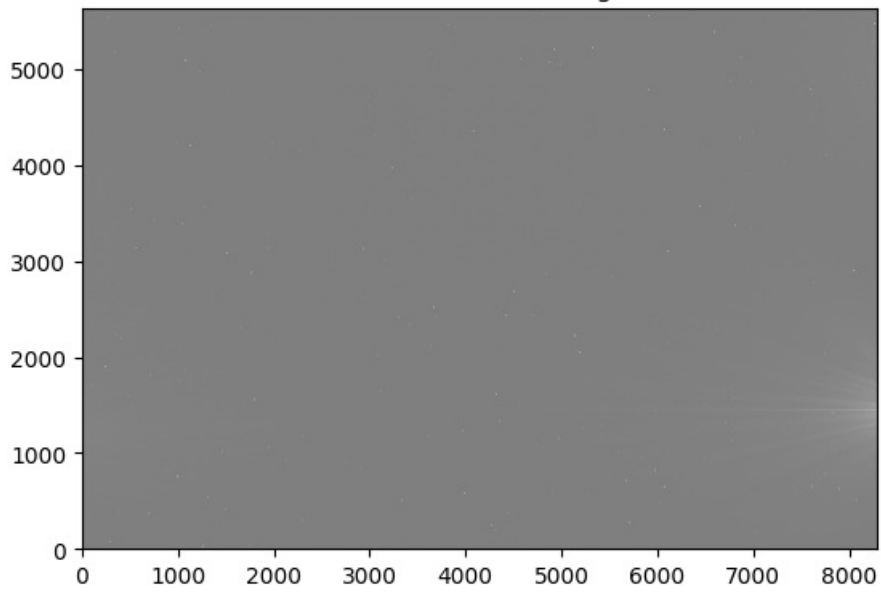


Cumulative Dark Signal Histogram.



Total Dark Signal Histogram.

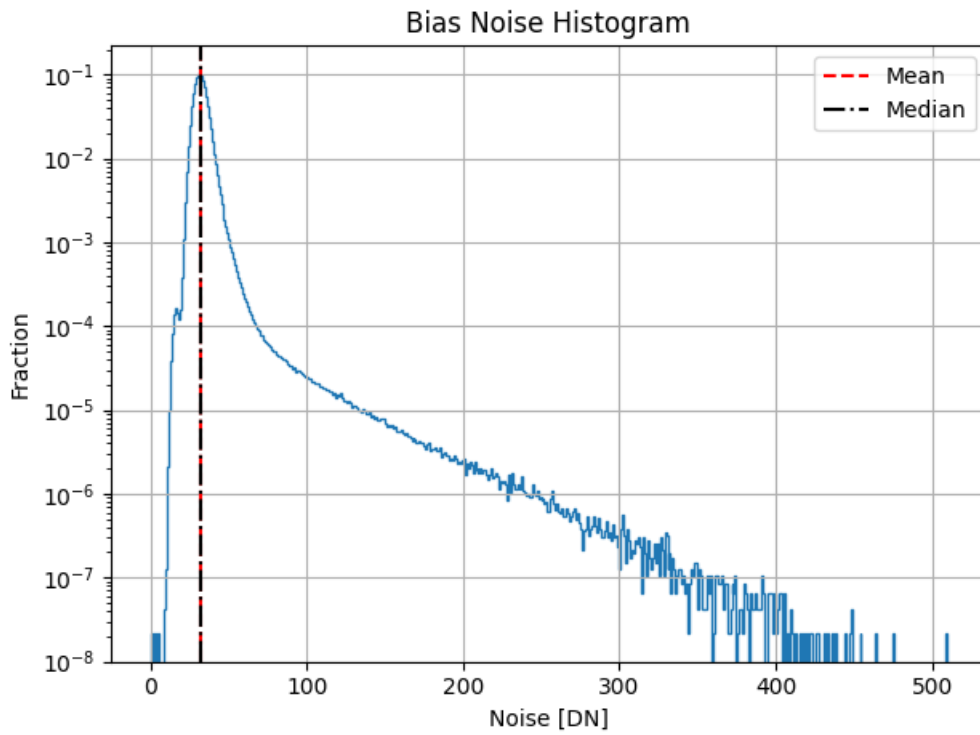
Combined Dark Image



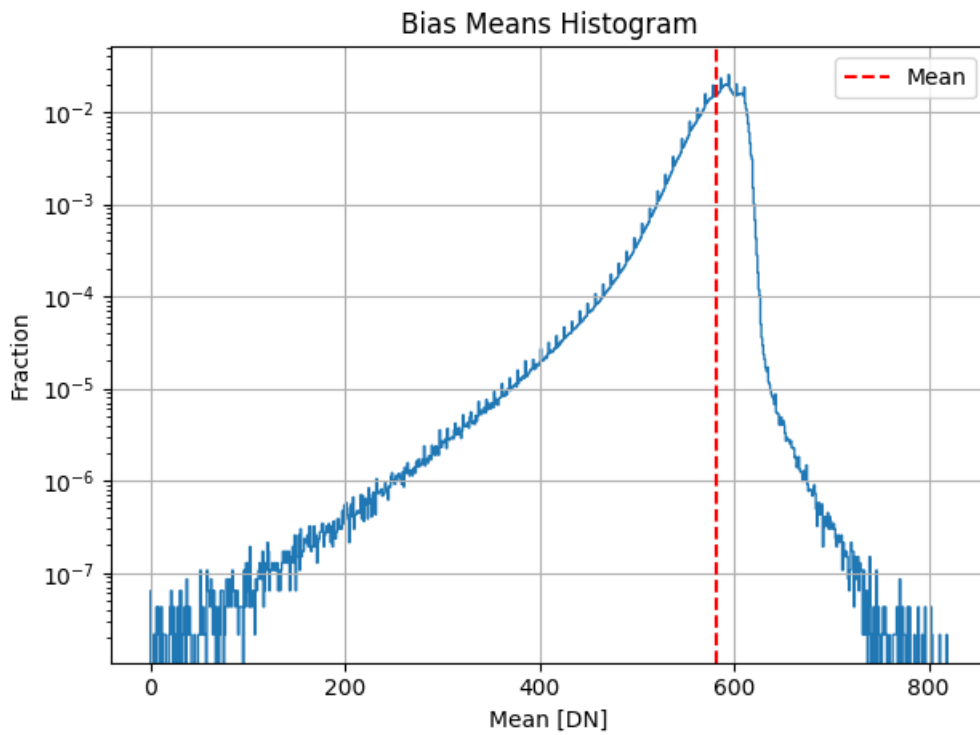
Dark Image.

Bias Analysis

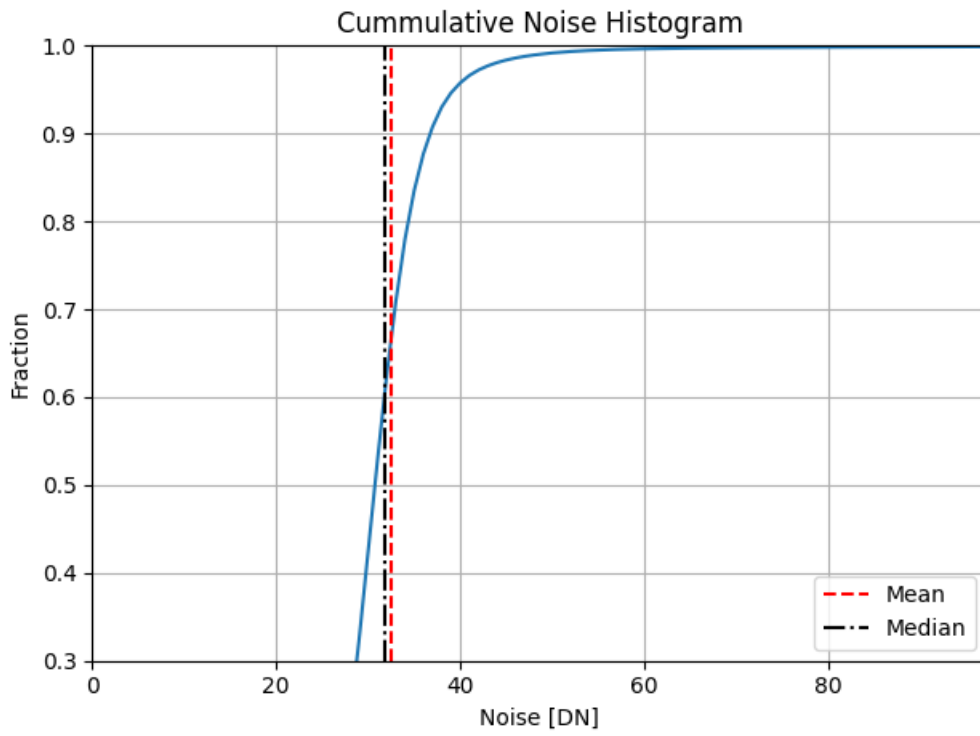
Mean (DN)	Noise (DN)
581	32.4



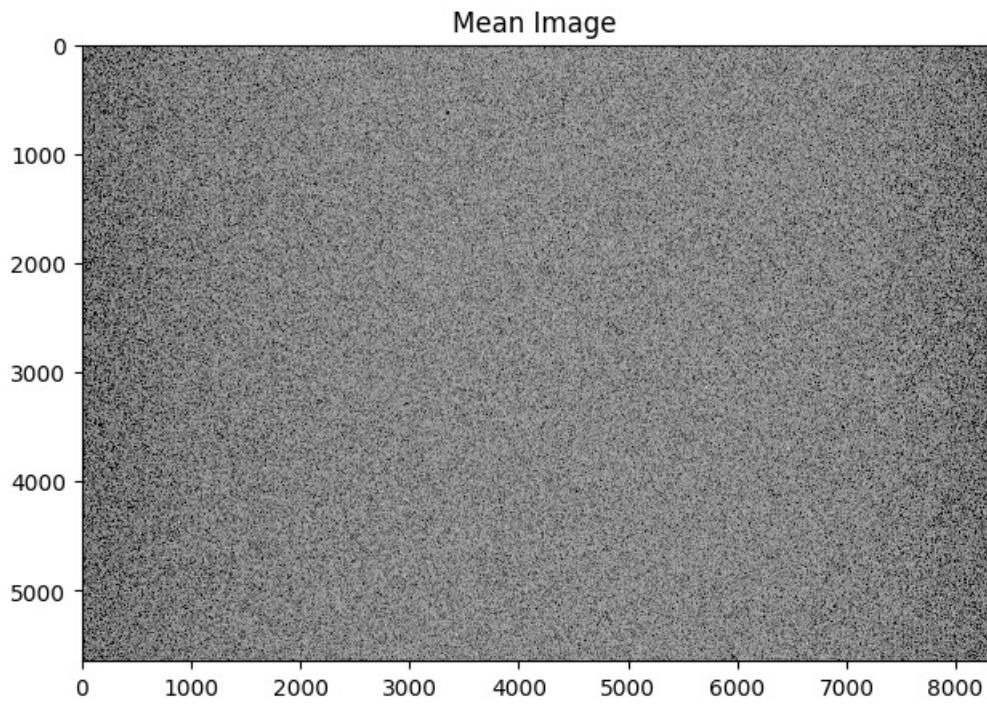
Bias noise histogram.



Bias means histogram.

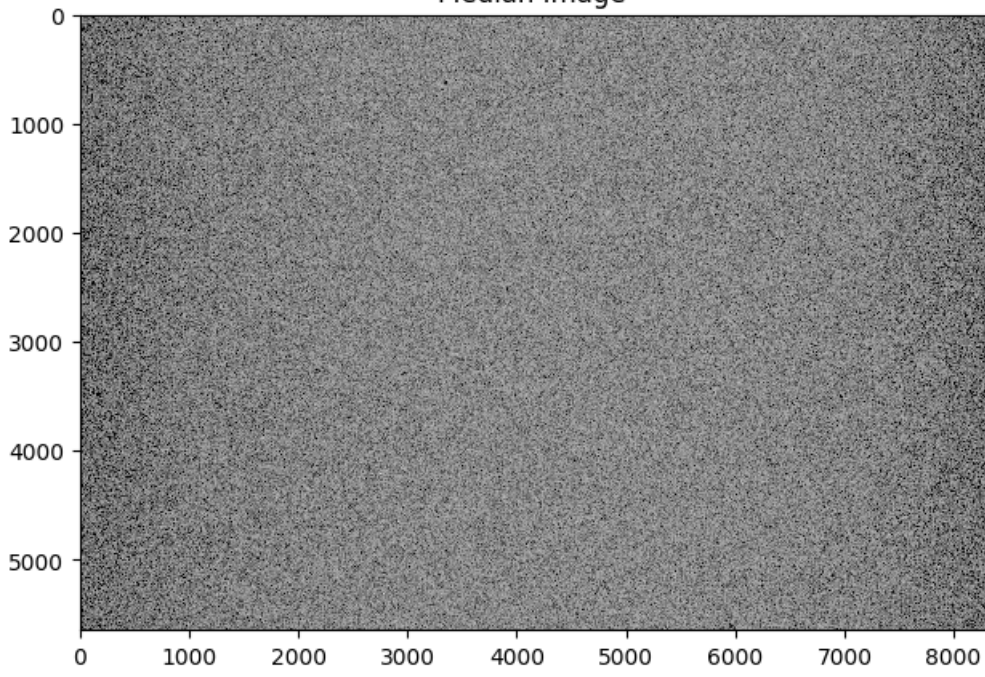


Bias cummulative noise histogram.



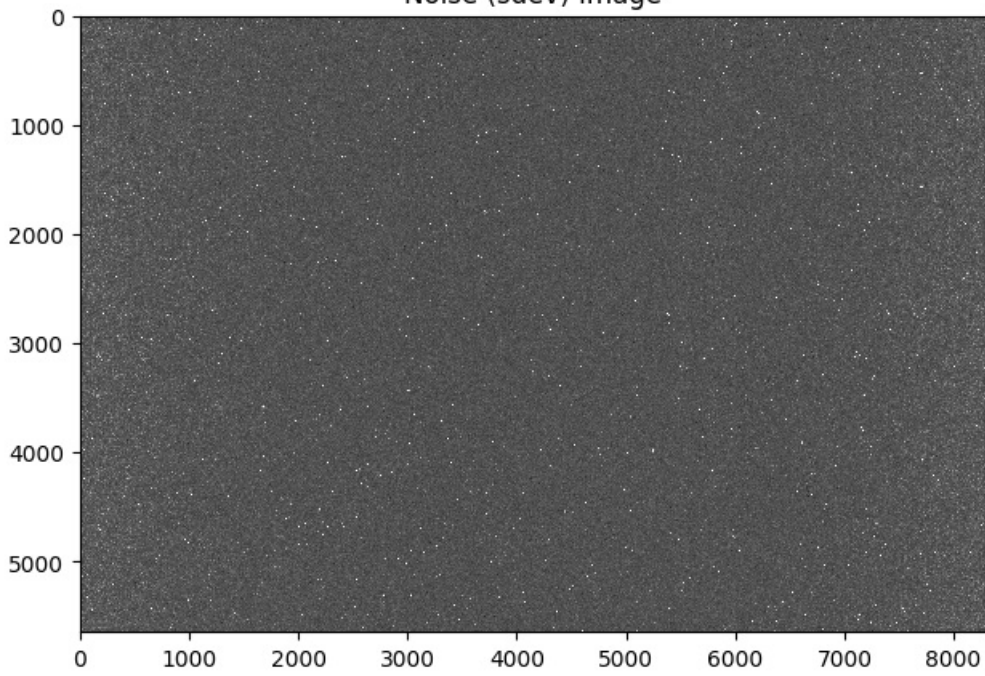
Bias mean image plot.

Median Image



Bias median image plot.

Noise (sdev) Image



Bias Noise (sdev) image plot.